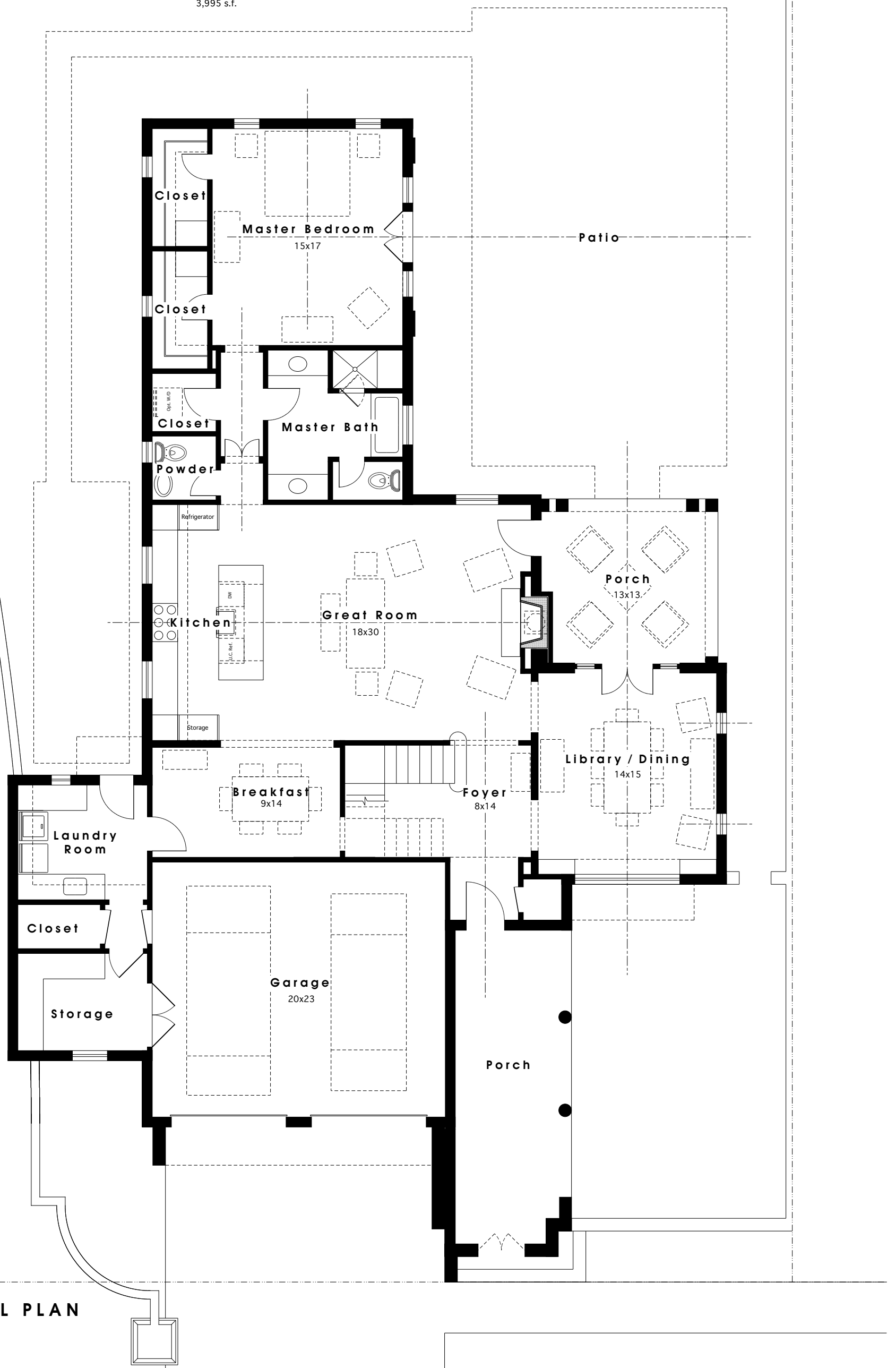


Building Areas:

Heated	3,049 s.f.
Garage	495 s.f.
Porches	451 s.f.
	<hr/>
	3,995 s.f.



MAIN LEVEL PLAN

1/8" = 1'-0"

HOUSE 1-A

**PUMP HOUSE LANE
A RESIDENTIAL DEVELOPMENT FOR
PUMP HOUSE PARTNERS, LLC
VESTAVIA HILLS, ALABAMA**